

Color Board Camera

1/3" CCD, High resolution

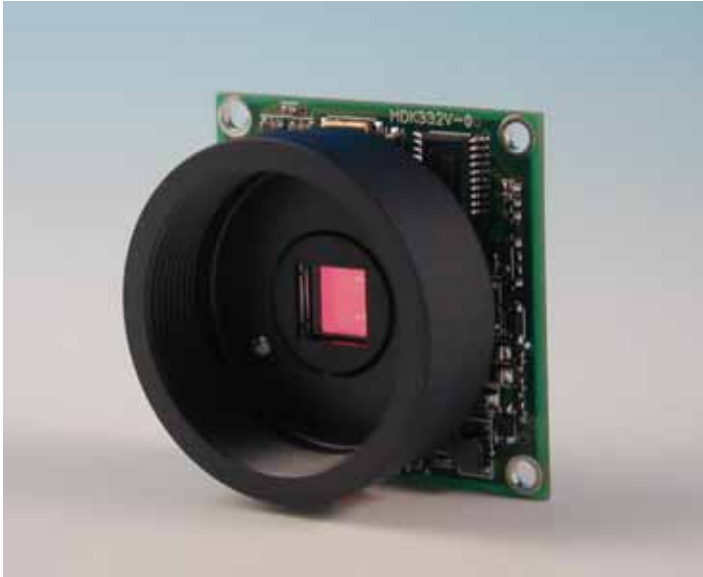


Photo: BC-171CS

BC-170 series

- * 1/3" CCD, High resolution
- * DSP(Digital signal processing) chip
- * CS-mount or M12 thread mount
- * Compact size
- * DIP switch setting
- * Reverse image switchable

Specifications	BC-171CS / 175CS	BC-171B / 175B
Sensor	1/3" CCD, Interline-transfer type	
No. of elements (H x V)	BC-161 (NTSC) : 768 x 494, BC-165 (PAL) : 752 x 582	
Sync. System	Internal	
Scanning system	2:1 interlace	
Video output	VS 1.0Vp-p, 75ohms	
Horizontal resolution	480TV lines	
S/N ratio	Greater than 48dB (AGC Off, Gamma Off, Aperture Off)	
Electric shutter	NTSC: 1/60 - 1/10,000 sec., PAL: 1/50 - 1/10,000sec.	
Gamma	0.45	
Image reversal (Mirror image)	Provided (switchable)	
Min. scene illumination	10 lux F1.2 (AGC ON)	
Power requirement	12VDC	12VDC
Operating temperature	0 to +45	
Lens mount	CS-Mount	M12 thread (Lens is option.)
Dimensions(W x H)	32 x 32mm	
Weight	14g approx.	9g approx.

- * Optional lenses available for variation of different view-angles upon request.
- * Camera with standard resolution CCD sensor is available upon request (BC-150 series).