

PRECISION MACHINE VISION LENS

MV5028TL

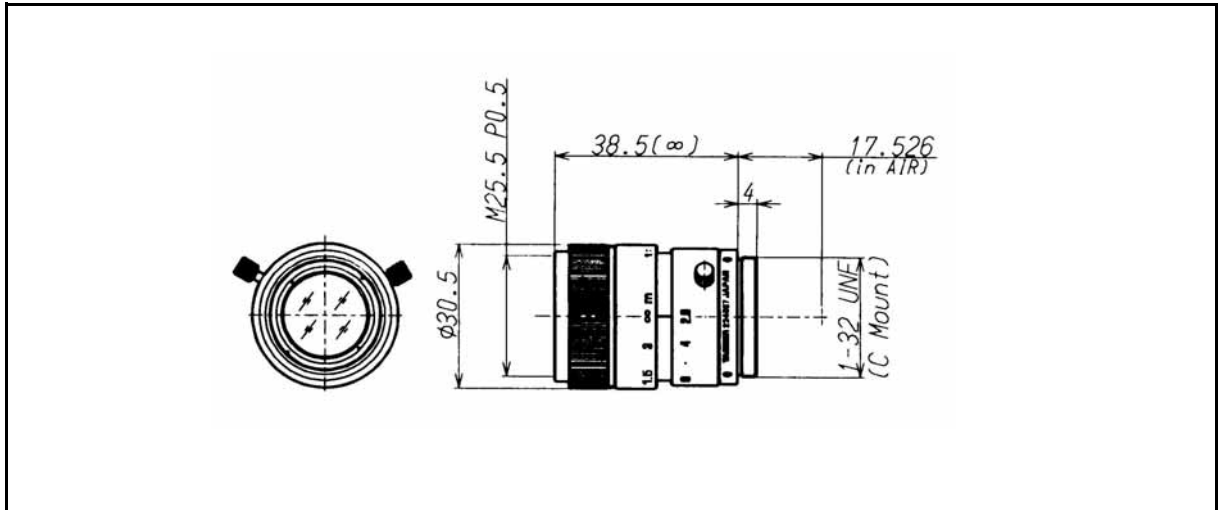


Image Format:	2/3-inch
Focal Length:	50mm
Relative Aperture:	F = 1: 2.8
Iris Range:	2.8 - 22
Angular Field of View:	Horizontal: 10.00°
	Vertical: 7.50°
Minimum Object Distance(MOD):	0.5m
Back Focus:	22.10mm
Flange Back:	17.526mm
Operation:	Focus: Manual with lock
	Iris: Manual with lock
Lens Mount:	C-Mount Type
Filter Screw:	25.5mm, P = 0.5
Dimensions:	φ30.5 x 38.5mm
Weight:	52g
Operating Temperature:	-5 ~ +50°C

Note : Angular of field of view (H x V) is on the 2/3-inch CCD sensor at MOD.